



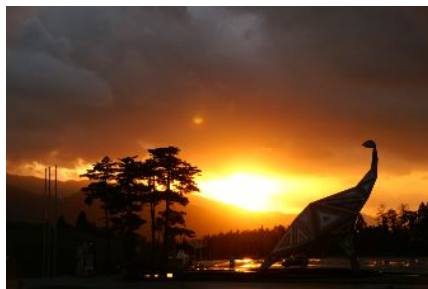
Geopark Katsuyama: Where Dinosaurs Slumber

Terao, Muroko-cho/Sugiyama, Kitadani-cho, Katsuyama City

Trekking to the land where dinosaurs once roamed, the egg-shaped Dinosaur Museum comes into view; close at hand are a treasure trove of fossil excavation sites. A step inside brings visitors back in time to the age of giants.



The Dinosaur Museum, as viewed from the peak of Mt. Muroko^①



Dinosaur sculpture in the setting sun (Katsuyama Dinosaur Forest)^②

The Fukui Prefectural Dinosaur Museum, situated in the eastern side of Katsuyama City, combines modern architecture with vistas of verdant mountains to create a picturesque panorama. From atop nearby Mt. Muroko, visitors can take in the museum and the Katsuyama Dinosaur Forest.

Since the discovery of fossils approximately 120 million years old near Kitadani-cho in 1988, the area has become a treasure trove of fossilized remains. Since that time, the

Sugiyama, Kitadani-cho site has yielded more dinosaur fossils than any other site in the country. At the Katsuyama Dinosaur Forest, visitors can try their hand at fossil excavation with rocks brought from the Sugiyama site. In 2009, the entire Katsuyama area was designated as the Dinosaur Valley Fukui Katsuyama Geopark to preserve its natural beauty and promote awareness of the importance of geo- and bio-diversity.



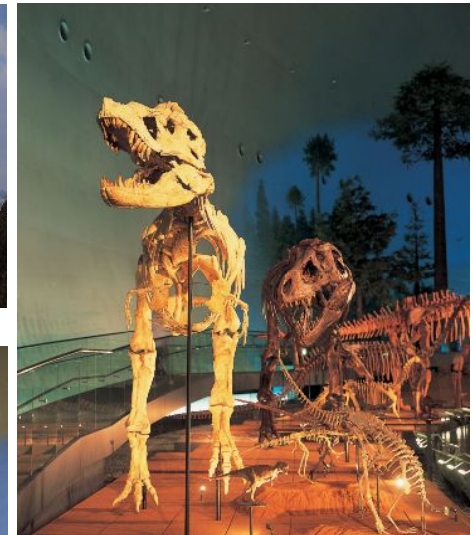
Fossil excavation site (Sugiyama, Kitadani-cho, Katsuyama)



Hands-on fossil excavation^③



Museum exterior



Inside the museum^④



Inside the museum

