



# Hikida's Funa River

Hikida, Tsuruga City

Along the Funa River, the narrow lanes of houses in Hikida bustled with shipping moving through the town. The town's history is that of the river, growing and prospering along this important local cargo route.



Funa River as it runs through the streets of Hikida



Traditional homes along the Funa River in Hikida

With a low river height owing to its fast flow, shipping along the Funa River was aided by the use of logs along its floor to allow ships heavily laden with cargo to slide along the canal without catching on the bottom.

The Hikida district, which developed as a lodging town during the Edo Period, still finds at its center the rivers and waterways that ran through it centuries ago. Among them is the Funa River, a canal built to ferry goods from Tsuruga Bay to Kyoto as well as the boats carrying them. Travelling upstream along the Shō River brings into view mountain peaks as the river's flow quickens toward its origin.



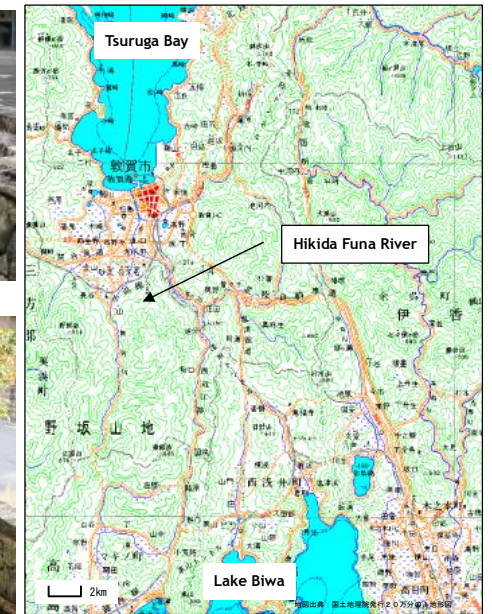
Mid-stream on the Shō River



Mouth of the Shō River and entrance to its canal



Playing in the Funa River



Road marker denoting the area as a major juncture<sup>2</sup>